

MINISTRY OF EDUCATION, HERITAGE AND ARTS

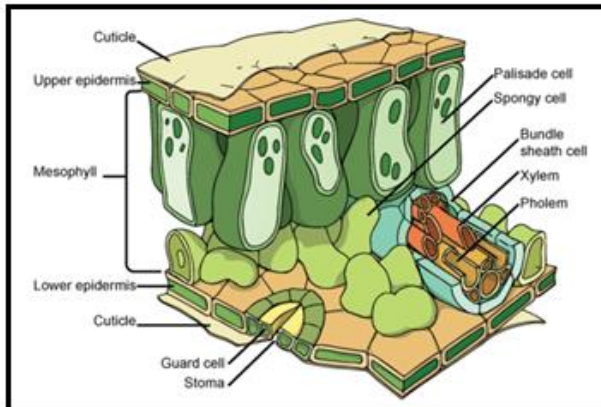
YEAR 12 BIOLOGY

REVISION WORKSHEET 7

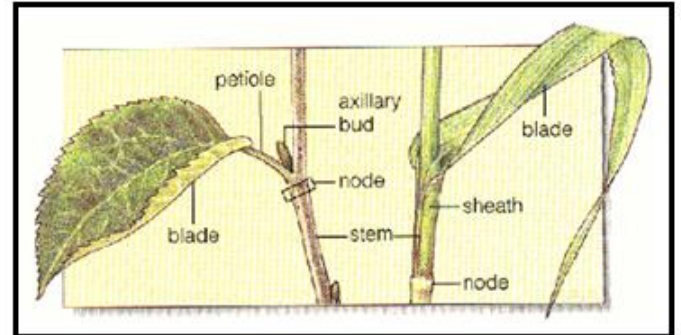
Write the answers to the following questions in your exercise/activity books.

Gas Exchange

1. Consider the diagrams given below of the internal structure (left) and external structure (right) of a leaf.

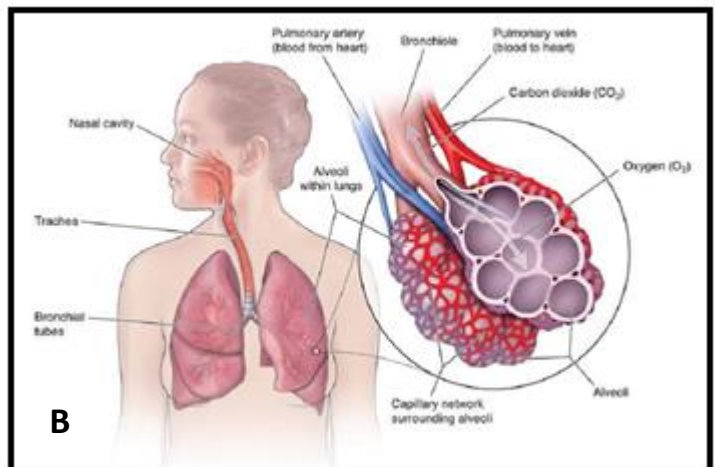
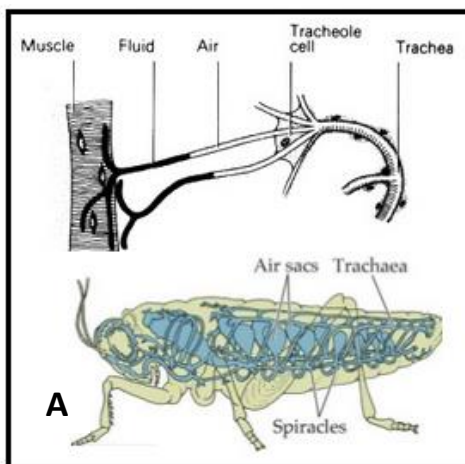


Source: <https://www.researchgate.net/>



Using 150 words, explain **three** adaptations for efficient gas exchange in plants. (5 marks)

2. Study the three types of gas exchange systems shown below:

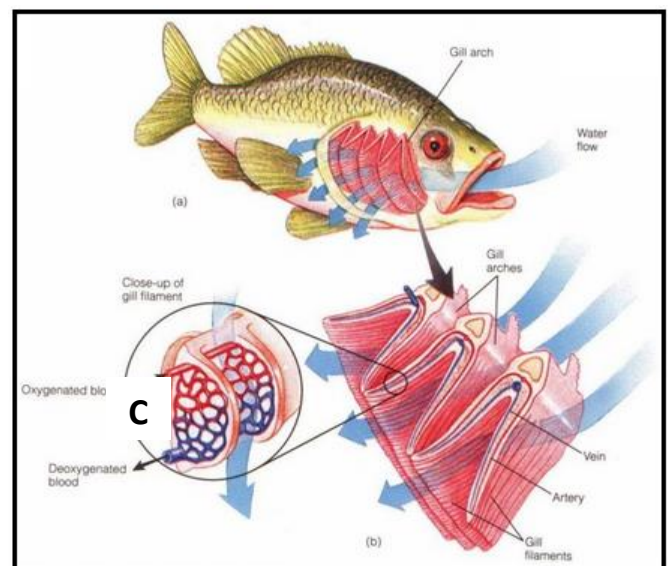


For each of these systems, briefly describe/explain,

- a. how the system works to allow oxygen to enter and leave;
- b. one adaptation for efficiency;
- c. how it is suitable or advantageous for the organisms who have this system.

(5 marks/system)

Source: <https://slideplayer.com/slide/>



The End